

MONTHLY MEMBERSHIP PROGRESS REPORT

LOCATION INDIA

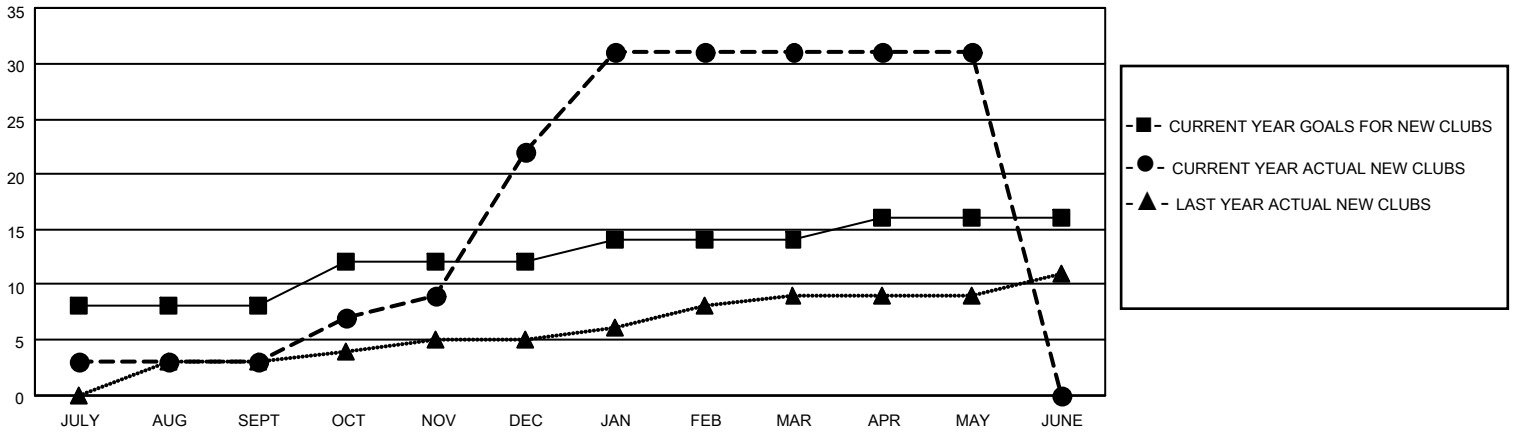
District 324A6

Results as of: 5/31/2021

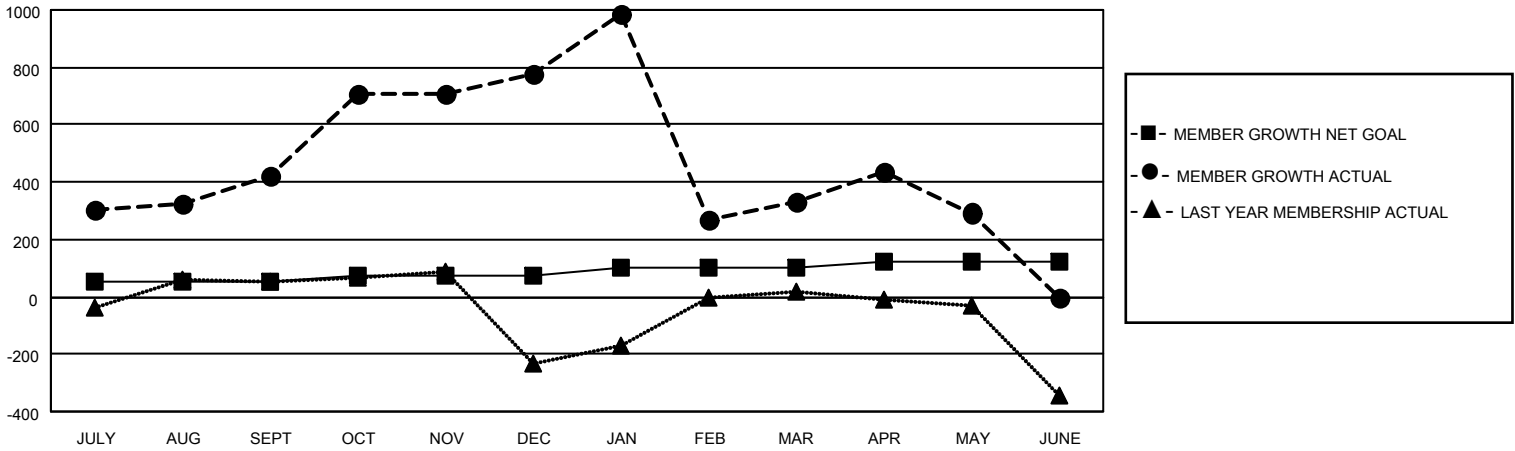
Clubs			
RESULTS FOR 2020-2021			
QUARTER	NEW CLUB GOAL	NEW CLUBS	DROPPED CLUBS
JULY/AUG/SEPT	8	3	0
OCT/NOV/DEC	4	19	0
JAN/FEB/MAR	2	9	32
APR/MAY/JUNE	2	0	0

Members			
RESULTS FOR 2020-2021			
QUARTER	MEMBER GROWTH NET GOAL	MEMBER GROWTH ACTUAL	DROPPED MEMBERS ACTUAL (including transfers)
JULY/AUG/SEPT	50	513	81
OCT/NOV/DEC	25	768	400
JAN/FEB/MAR	25	441	750
APR/MAY/JUNE	25	323	289

GOALS AND ACTUAL NEW CLUBS CUMULATIVE



GOALS AND ACTUAL MEMBERS CUMULATIVE



DROPPED CLUBS: 32

140 CLUBS OF 178 ADDED 1 OR MORE NEW MEMBERS

GENDER DISTRIBUTION

MALE 3,611 (68.36%)
 FEMALE 1,671 (31.64%)

DROPPED MEMBERS

[CLICK HERE FOR CUMULATIVE MEMBERSHIP DATA](#)

DECEASED	14
CLUB CANCELLED	720
OTHER	786
TOTAL	1,520

TOTAL FAMILY UNIT MEMBERS	3,400
FAMILY MEMBERS PAYING HALF DUES	2,074